



DC
Dosa Corner

MENU



Just contact us for orders

 03 8528 5120

Info@thedosacorner.com.au

 587 Barkly Street, West Footscray VIC 3012
Australia

www.thedosacorner.com.au



SNACK CORNER

■ SAMOSA	\$3.00
■ VADA	\$7.00
■ SAMBAR VADA	\$7.50
■ IDLY	\$7.00
■ SAMBAR IDLY	\$7.50
■ IDLY + VADA	\$7.00
■ SAMBAR IDLY + VADA	\$7.50
■ GHEE PODI IDLY	\$7.00
■ CUT MIRCHI	\$7.00
■ MIRCHI (4PCS)	\$7.00
■ POORI (preparation time - min. 20 minutes)	\$9.95

CHAT CORNER

■ SAMOSA CHAT	\$8.00
■ SAMOSA RAGADA	\$8.00
■ PAPDI CHAT	\$8.00
■ PAPDI RAGADA	\$8.00
■ ALOO TIKKI CHAT	\$8.00
■ ALOO TIKKI RAGADA	\$8.00
■ BHEL POORI	\$8.00
■ MASALA POORI	\$9.95
■ PANI POORI	\$8.00
■ PAV BHAI	\$8.95

DOSA CORNER

■ PLAIN DOSA	\$4.95
■ KAL DOSA	\$6.00
■ PAPER DOSA	\$7.00
■ PODI DOSA	\$7.95
■ ONION DOSA	\$7.95
■ MASALA DOSA	\$10.95
■ MYSORE MASALA DOSA	\$11.95
■ PANEER DOSA	\$10.95
■ CHEESE DOSA	\$10.95
■ EGG DOSA	\$9.95
■ CHICKEN DOSA	\$12.95
■ LAMB DOSA	\$12.95
■ PIZZA DOSA <small>PIZZA DOSA(PREPARATION TIME - MIN. 20 MINUTES)</small>	\$9.95
■ ALL-MIX DOSA (VEG)	\$12.95
■ ALL-MIX DOSA (NON-VEG)	\$13.95
■ CHEF SPECIAL DOSA	\$14.95

70MM DOSA CORNER

■ 70MM PLAIN DOSA	\$10.00
■ 70MM PODI DOSA	\$14.00
■ 70MM ONION DOSA	\$14.00
■ 70MM MASALA DOSA	\$14.95



■ Veg

**Ask for availability

**Any extra Stuffings or Toppings will be charged extra



- 70MM MYSORE MASALA DOSA \$15.95
- 70MM PANEER DOSA \$14.95
- 70MM CHEESE DOSA \$14.95
- 70MM CHICKEN DOSA \$15.95
- 70MM LAMB DOSA \$15.95

SET DOSA CORNER

- SET DOSA \$4.95
- MASALA SET DOSA \$10.95
- PANEER SET DOSA \$10.95
- CHICKEN SET DOSA \$12.95
- LAMB SET DOSA \$12.95

RAVA DOSA CORNER

(PREPARATION TIME – MIN. 20 MINUTES)

- RAVA DOSA \$8.95
- RAVA ONION DOSA \$12.95
- RAVA PODI DOSA \$12.95
- RAVA MASALA DOSA \$14.95
- RAVA MYSORE MASALA DOSA \$15.95
- RAVA PANEER DOSA \$14.95
- RAVA CHICKEN DOSA \$16.95
- RAVA LAMB DOSA \$16.95

DOSA DEALS CORNER

- MASALA DOSA + IDLY + VADA + CAN OF SOFT DRINK \$14.95
- PANEER DOSA + IDLY + VADA + CAN OF SOFT DRINK \$14.95
- EGG DOSA + IDLY + VADA + CAN OF SOFT DRINK \$14.95
- CHICKEN DOSA + IDLY + VADA + CAN OF SOFT DRINK \$15.95
- LAMB DOSA + IDLY + VADA + CAN OF SOFT DRINK \$15.95

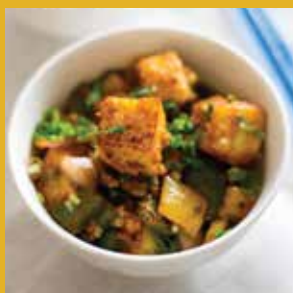
FUSION DOSA CORNER

- MASALA SPRING ROLL DOSA \$13.95
- PANEER SPRING ROLL DOSA \$13.95
- CHICKEN SPRING ROLL DOSA \$14.95
- LAMB SPRING ROLL DOSA \$14.95

UTHAPPAM CORNER

(PREPARATION TIME – MIN. 30 MINUTES)

- ONION UTHAPPAM \$10.95
- ONION TOMATO UTHAPPAM \$10.95
- ONION PODI UTHAPPAM \$10.95
- CHEESE & CHILLI UTHAPPAM \$9.95
- SPECIAL UTHAPPAM \$10.95



■ Veg

**Please check for availability

**Extra charge for additional Stuffings/Toppings



■ KAJU UTHAPPAM \$10.95

INDO CHINESE CORNER – STARTER

■ VEG MANCHURIA \$12.95
 ■ VEG 65 \$12.95
 ■ BABY CORN MANCHURIA \$12.95
 ■ BABY CORN 65 \$12.95
 ■ GOBI MANCHURIA \$12.95
 ■ CHILLI GOBI \$12.95
 ■ GOBI 65 \$12.95
 ■ GINGER GOBI \$12.95
 ■ CHILLI PANEER \$13.95
 ■ CHILLI IDLY \$13.95
 CHICKEN LOLLYPOP \$13.95
 CHICKEN PAKORA \$13.95
 CHICKEN MANCHURIA \$13.95
 CHICKEN 65 \$13.95
 CHILLI CHICKEN \$13.95
 SCHEZWAN CHICKEN \$13.95
 GINGER CHICKEN \$13.95
 FISH PAKORA \$14.95
 CHILLI FISH \$14.95

GINGER FISH \$14.95
 PRAWNS 65 \$14.95
 CHILLI PRAWNS \$14.95
 GINGER PRAWNS \$14.95

INDO CHINESE CORNER – GRAVY

■ VEG MANCHURIA \$14.95
 ■ GOBI MANCHURIA \$14.95
 ■ CHILLI GOBI \$14.95
 ■ GINGER GOBI \$14.95
 ■ CHILLI PANEER \$14.95
 CHICKEN MANCHURIA \$14.95
 CHILLI CHICKEN \$14.95
 GINGER CHICKEN \$14.95
 GINGER FISH \$15.95
 CHILLI FISH \$15.95
 GINGER PRAWNS \$15.95
 CHILLI PRAWNS \$15.95

RICE & NOODLES CORNER

■ VEG/SCHEZWAN VEG
 FRIED RICE \$12.95
 EGG/SCHEZWAN EGG
 FRIED RICE \$13.95



■ Veg

**Please check for availability **Extra charge for additional Stuffings/Toppings



CHICKEN/SCHEZWAN

CHICKEN FRIED RICE \$13.95

MIX NON-VEG/SCHEZWAN

MIX NON-VEG FRIED RICE \$14.95

■ VEG/ SCHEZWAN VEG

NOODLES \$12.95

EGG/SCHEZWAN EGG

NOODLES \$13.95

CHICKEN/SCHEZWAN

CHICKEN NOODLES \$13.95

MIX NON-VEG/SCHEZWAN

MIX NON-VEG NOODLES \$14.95

BIRYANI CORNER

■ VEG DUM BIRYANI \$13.00

CHICKEN DUM BIRYANI \$14.00

GOAT DUM BIRYANI \$15.00

EGG BIRYANI \$15.00

■ GOBI 65 BIRYANI \$15.00

■ PANEER 65 BIRYANI \$15.00

CHICKEN 65 BIRYANI \$15.00

FRIED CHICKEN BIRYANI \$15.00

FISH BIRYANI \$15.00

FAMILY BIRYANI DEALS

■ FAMILY VEG DUM BIRYANI \$55.00

FAMILY CHICKEN

DUMBIRYANI \$60.00

FAMILY GOAT DUM BIRYANI \$65.00

■ FAMILY PANEER 65 BIRYANI \$65.00

■ FAMILY GOBI 65 BIRYANI \$65.00

FAMILY CHICKEN 65 BIRYANI \$65.00

FAMILY FRIED CHICKEN

BIRYANI \$65.00

FAMILY FISH BIRYANI \$65.00

JUMBO BIRYANI DEALS

■ JUMBO VEG DUM BIRYANI \$75.00

JUMBO CHICKEN DUM BIRYANI \$80.00

JUMBO GOAT DUM BIRYANI \$85.00

■ JUMBO GOBI 65 BIRYANI \$85.00

■ JUMBO PANEER 65 BIRYANI \$85.00

JUMBO CHICKEN 65 BIRYANI \$85.00

JUMBO FRIED CHICKEN

BIRYANI \$85.00

JUMBO FISH BIRYANI \$85.00

FAMILY STARTER DEALS

■ FAMILY VEG MANCHURIA/
VEG 65 \$100.00



■ Veg

**Please check for availability **Extra charge for additional Stuffings/Toppings



- FAMILY GOBI 65/ CHILLI/ GINGER
/ MANCHURIA GOBI \$100.00
- FAMILY CHICKEN 65/ CHILLI/
GINGER/ SCHEZWAN/
MANCHURIA CHICKEN \$120.00

JUMBO STARTER DEALS

- JUMBO VEG MANCHURIA/
VEG 65 \$125.00
- JUMBO GOBI 65/ CHILLI/
GINGER/ MANCHURIA GOBI \$125.00
- JUMBO CHICKEN 65/ CHILLI/
GINGER/ SCHEZWAN/
MANCHURIA CHICKEN \$145.00

FAMILY RICE/ NOODLES DEALS

- FAMILY VEG/SCHEZWAN VEG
FRIED RICE \$50.00
- FAMILY EGG/SCHEZWAN EGG
FRIED RICE \$55.00
- FAMILY CHICKEN/SCHEZWAN
CHICKEN FRIED RICE \$55.00
- FAMILY MIX NON-VEG/
SCHEZWAN FRIED RICE \$60.00
- FAMILY VEG/SCHEZWAN
VEG NOODLES \$50.00

- FAMILY EGG/SCHEZWAN
EGG NOODLES \$55.00
- FAMILY CHICKEN/SCHEZWAN
CHICKEN NOODLES \$55.00
- FAMILY MIX NON-VEG/
SCHEZWAN MIX NON-
VEG NOODLES \$60.00

JUMBO RICE/ NOODLES DEALS

- JUMBO VEG/SCHEZWAN VEG
FRIED RICE \$75.00
- JUMBO EGG/SCHEZWAN
EGG FRIED RICE \$85.00
- JUMBO CHICKEN/SCHEZWAN
CHICKEN FRIED RICE \$85.00
- JUMBO MIX NON-VEG/
SCHEZWAN FRIED RICE \$90.00
- JUMBO VEG/SCHEZWAN
VEG NOODLES \$75.00
- JUMBO EGG/SCHEZWAN
EGG NOODLES \$85.00
- JUMBO CHICKEN/SCHEZWAN
CHICKEN NOODLES \$85.00
- JUMBO MIX NON-VEG/
SCHEZWAN NOODLES \$90.00



■ Veg

**Please check for availability **Extra charge for additional Stuffings/Toppings



DESSERTS CORNER

KULFI FALOODA	\$7.00
GULAB JAMUN	\$6.00
RASAMALAI	\$7.00

DRINKS CORNER

MANGO LASSI	\$3.00
CAN OF SOFT DRINK	\$3.00
TEA	\$3.00

WE CATER FOR ALL OCCASIONS - INDOOR/ OUTDOOR
ENQUIRE ABOUT OUR SET MENU

OPENING HOURS
ALL SEVEN DAYS
11 AM - 11 PM
(KITCHEN CLOSSES AT 10:30 PM)

*PLEASE ADVISE OUR FRIENDLY STAFF OF ANY FOOD ALLERGIES YOU MAY HAVE



■ Veg

**Please check for availability

**Extra charge for additional Stuffings/Toppings



📍 587 Barkly Street,
West Footscray,
VIC 3012

☎ 03 8528 5120

📍 169 King Street,
Melbourne
VIC 3000

☎ 03 9642 1832

📍 64 Sahi Crescent,
Roxburgh Park,
VIC 3064

☎ 03 8339 0350

info@thedosacorner.com.au



www.thedosacorner.com.au